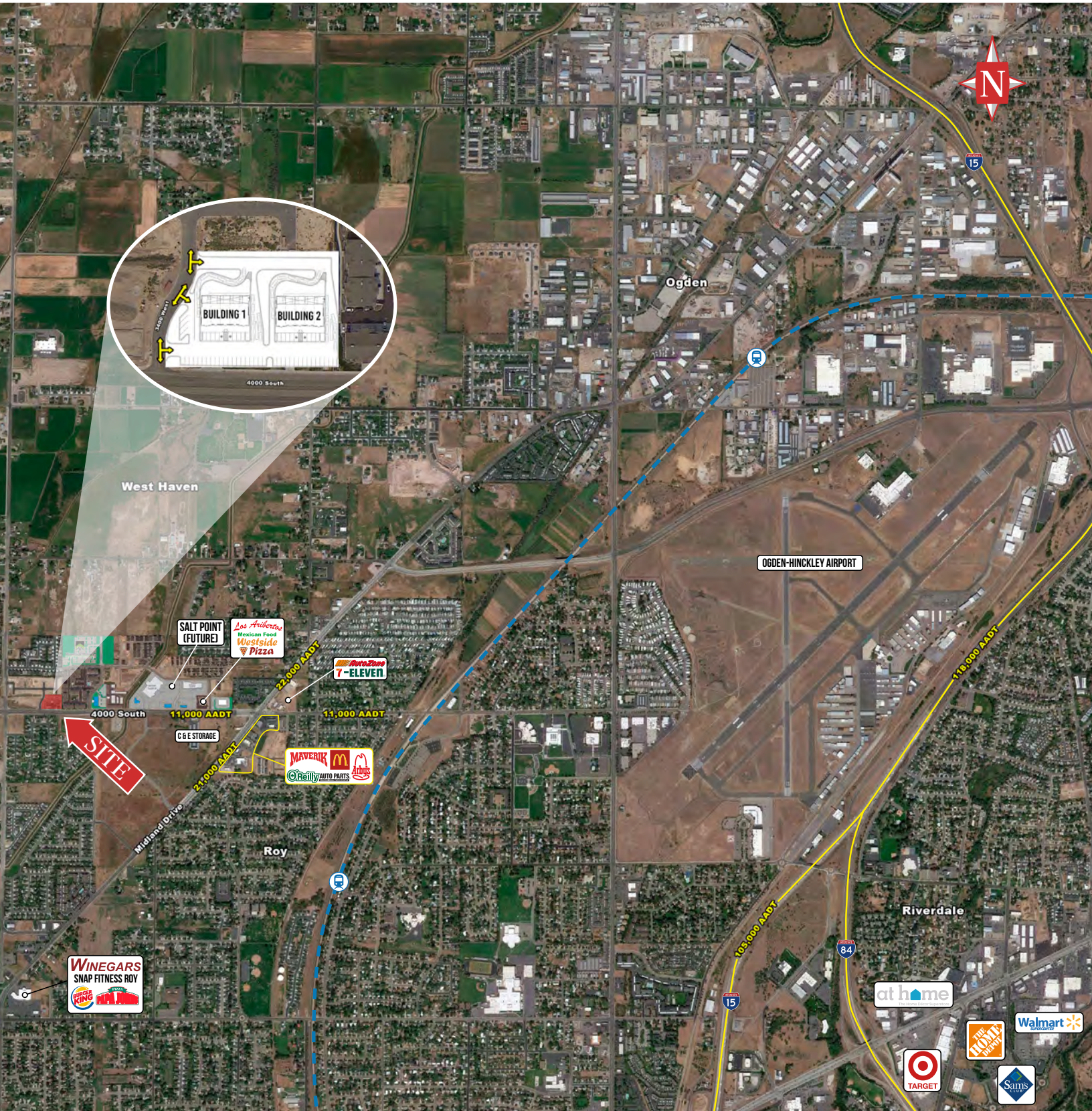


# West Haven Retail Center

3366 West & 4000 South  
West Haven, UT 84401



## RETAIL | FOR LEASE

### PROPERTY INFORMATION

- > \$29.00 PSF, NNN for in-line
- > \$40.00 PSF, NNN for drive-thru
- > 2 Buildings: 1,200 - 6,000 SF available
- > 4 drive-thrus available
- > Approx. September 1 delivery
- > Salt Point retail and residential development - 268 apartment units completed, 288 town homes & 112 single family homes planned and under construction.

### DEMOGRAPHICS

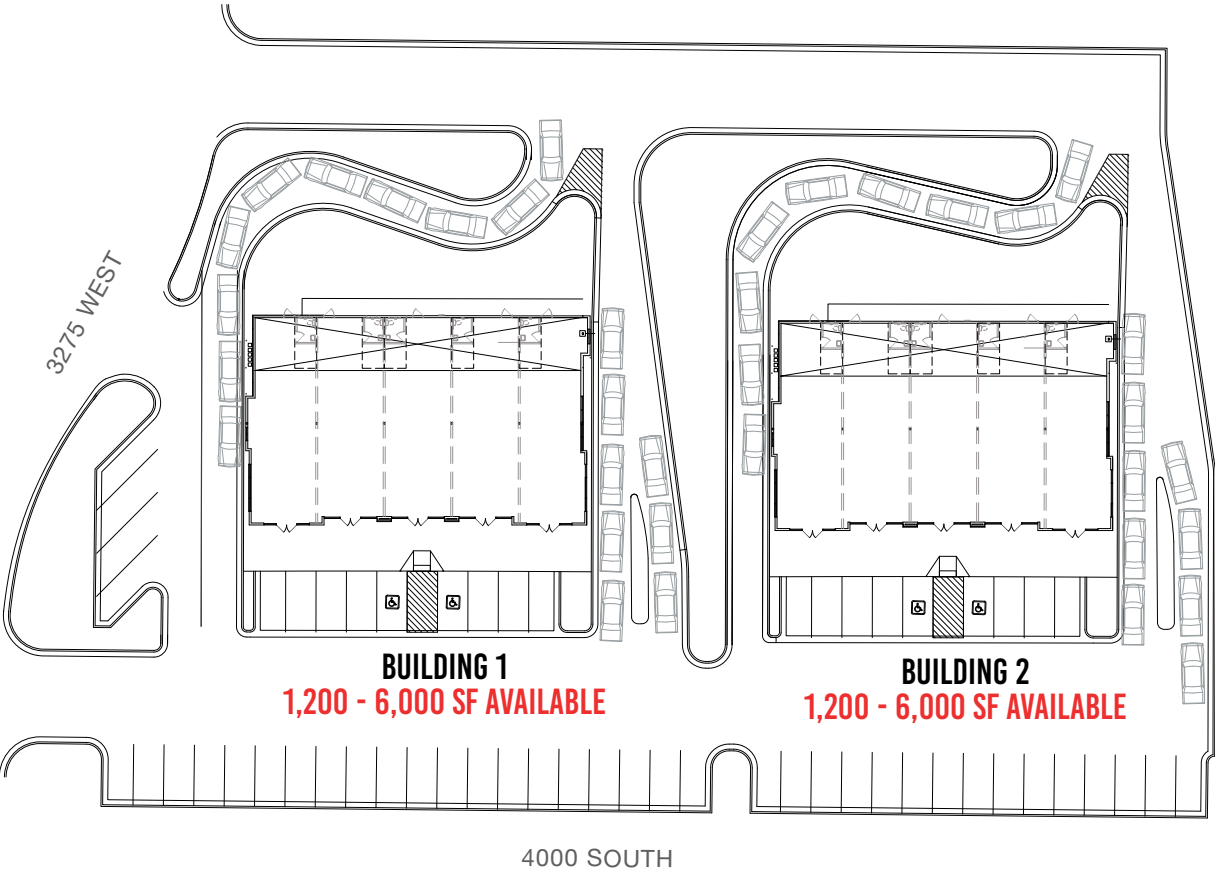
POPULATION	1 MILE	3 MILE	5 MILE
2022 EST	11,623	73,121	155,619
2027 PROJ	12,249	75,811	162,155
HOUSEHOLDS			
2022 EST	3,883	23,912	50,858
2027 PROJ	4,113	24,883	53,156
INCOME			
2022 AVG	\$121,036	\$116,789	\$109,676
2022 MED	\$90,089	\$91,837	\$88,503

Source: ESRI 2022





SITE PLAN



FRONT ELEVATION

