

Haynes WVC Land

2351 - 2373 South 5700 West
West Valley City, UT 84120

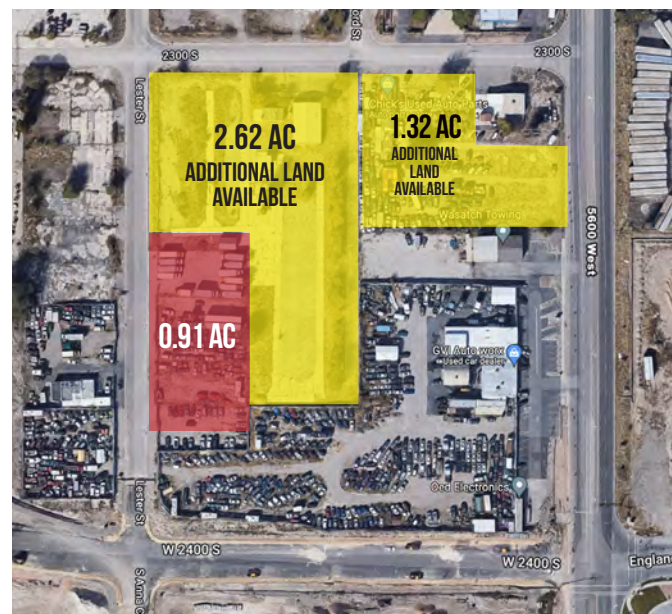


LAND / INDUSTRIAL | FOR SALE

Two, 0.45 acre light industrial parcels sold together or independently. Location gives convenient access to many highways 201 east west, Mountain View South minutes from SLC airport, downtown Salt Lake, Tooele with direct access to Herriman.

PROPERTY INFORMATION

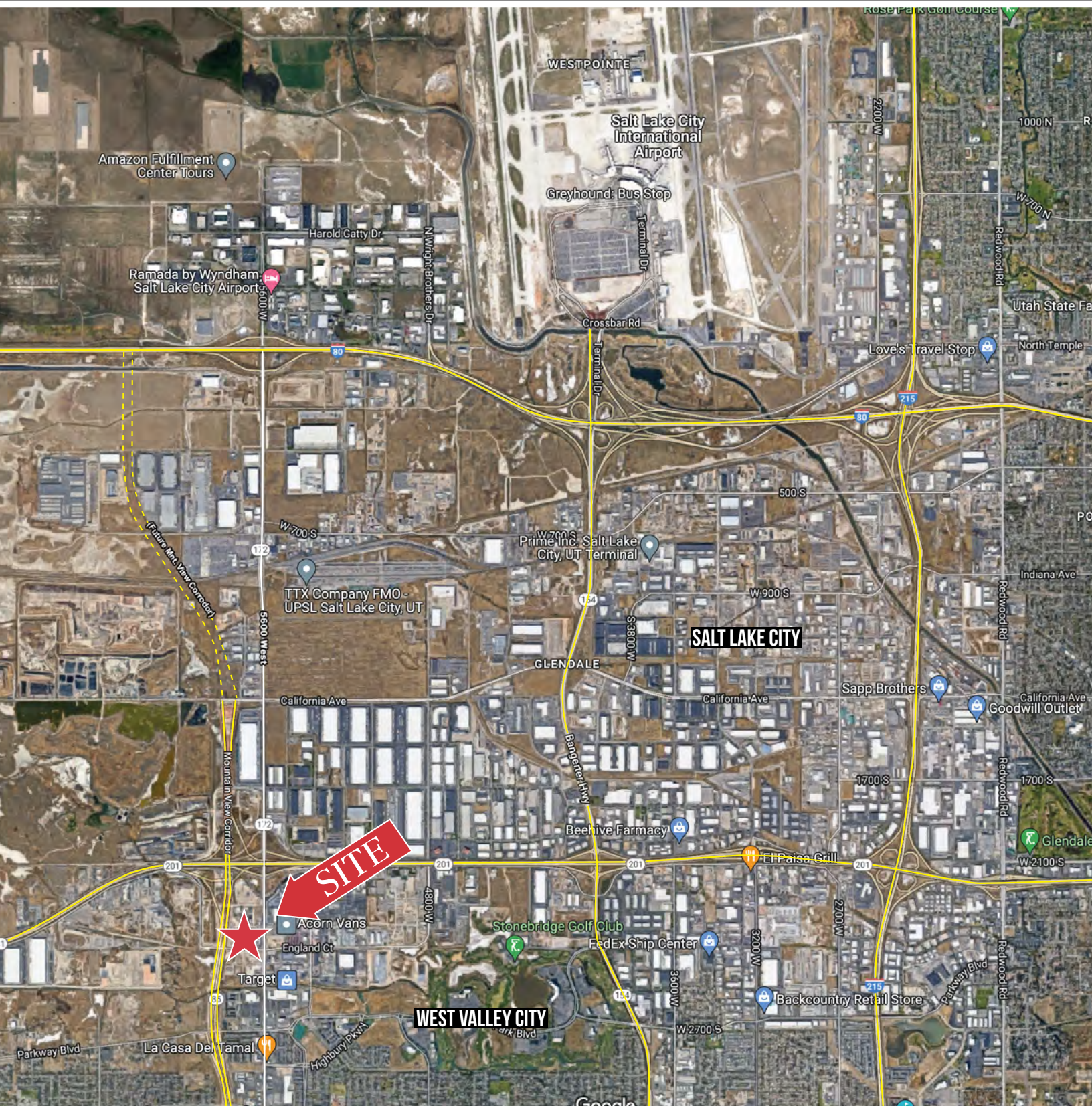
- Sales Price: \$1,175,000
- 0.45 - 0.91 acres available
- 132.5' deep
- 300' frontage on 5700 west
- Abutting 2.62 acres also for sale for a total of 3.53 acres when purchased together



NAIPremier
COMMERCIAL REAL ESTATE SERVICES, WORLDWIDE

801 255 3333 | naipremier.com

Joe Marcinkewicz
c 801 590 7676
joem@naipremier.com



NAI Premier

7455 Union Park Avenue Ste. A, Midvale, Utah 84047

801 255 3333 | naipremier.com

NO WARRANTY OR REPRESENTATION, EXPRESS OR IMPLIED, IS MADE AS TO THE ACCURACY OF THE INFORMATION CONTAINED HEREIN, AND THE SAME IS SUBMITTED SUBJECT TO ERRORS, OMISSIONS, CHANGE OF PRICE, RENTAL OR OTHER CONDITIONS, PRIOR SALE, LEASE OR FINANCING, OR WITHDRAWAL WITHOUT NOTICE, AND OF ANY SPECIAL LISTING CONDITIONS IMPOSED BY OUR PRINCIPALS. NO WARRANTIES OR REPRESENTATIONS ARE MADE AS TO THE CONDITION OF THE PROPERTY OR ANY HAZARDS CONTAINED THEREIN ARE ANY TO BE IMPLIED.