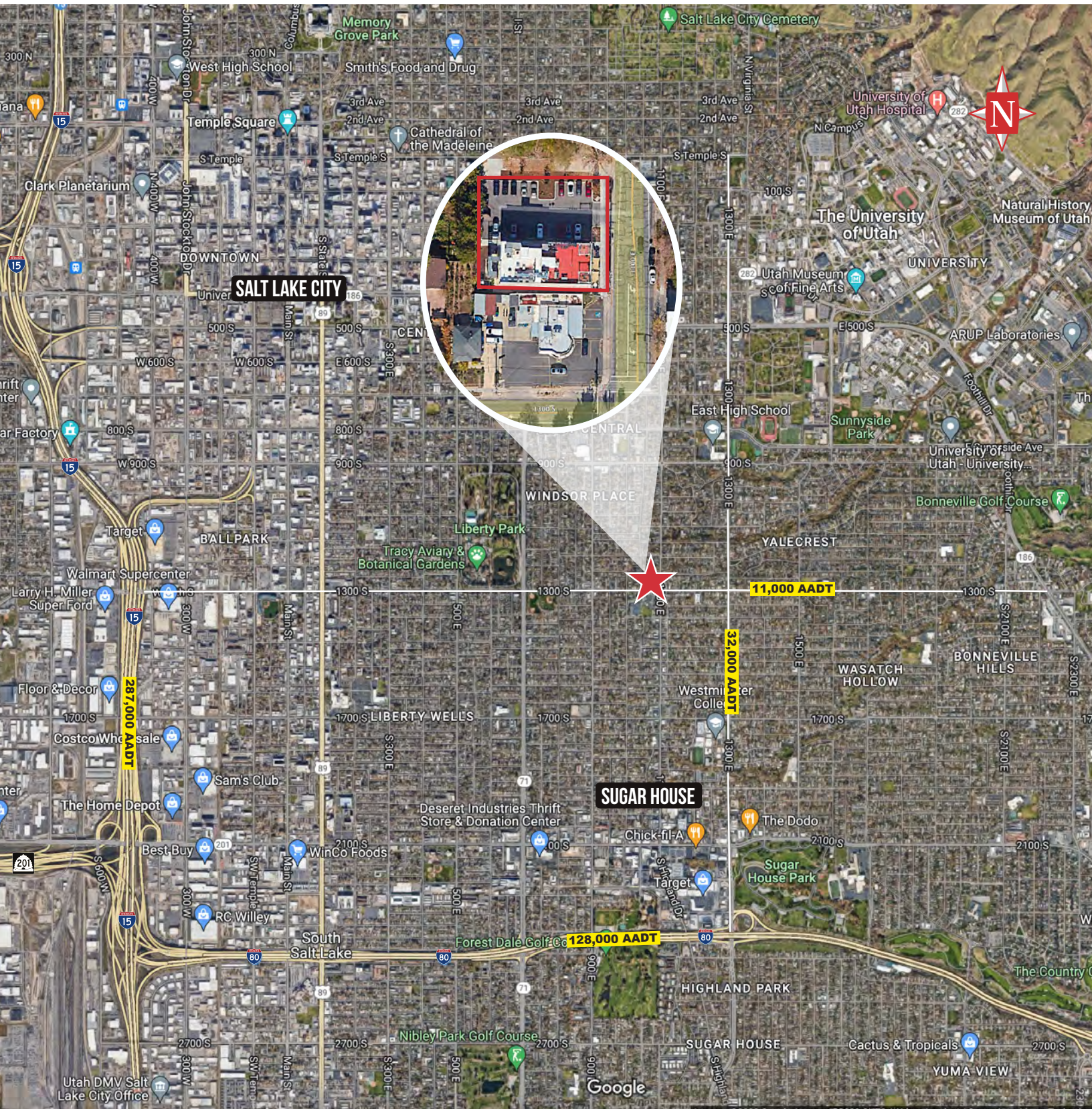


1234 S. 1100 E. | Salt Lake City, UT 84105

FOR LEASE

# Sugar House Modern Office

1234 South 1100 East, Ste. 202  
Salt Lake City, UT 84105



## OFFICE | FOR LEASE

### PROPERTY INFORMATION

- > Lease Rate: \$27.00 PSF NNN
- > 2,542 RSF
- > 2nd floor suite
- > Modern open concept
- > Windows cover two entire walls
- > Located in Sugar House and near downtown Salt Lake City
- > January 1, 2023 occupancy
- > **DO NOT DISTURB TENANT**

### DEMOGRAPHICS

POPULATION	1 MILE	3 MILE	5 MILE
2022 EST	21,975	156,259	294,886
2027 PROJ	22,015	163,441	305,979
HOUSEHOLDS			
2022 EST	9,543	71,114	123,438
2027 PROJ	9,601	75,343	129,448
INCOME			
2022 AVG	\$154,054	\$123,056	\$118,227
2022 MED	\$114,060	\$91,506	\$87,216

Source: ESRI 2022



7455 Union Park Avenue Ste. A, Midvale, Utah 84047  
801 255 3333 | [naipremier.com](http://naipremier.com)



801 255 3333 | [naipremier.com](http://naipremier.com)

Jim McLachlan  
c 801 750 7991  
[jim@naipremier.com](mailto:jim@naipremier.com)

NO WARRANTY OR REPRESENTATION, EXPRESS OR IMPLIED, IS MADE AS TO THE ACCURACY OF THE INFORMATION CONTAINED HEREIN, AND THE SAME IS SUBMITTED SUBJECT TO ERRORS, OMISSIONS, CHANGE OF PRICE, RENTAL OR OTHER CONDITIONS, PRIOR SALE, LEASE OR FINANCING, OR WITHDRAWAL WITHOUT NOTICE, AND OF ANY SPECIAL LISTING CONDITIONS IMPOSED BY OUR PRINCIPALS NO WARRANTIES OR REPRESENTATIONS ARE MADE AS TO THE CONDITION OF THE PROPERTY OR ANY HAZARDS CONTAINED THEREIN ARE ANY TO BE IMPLIED.



FLOOR PLAN

