

South Jordan Professional Office

1055 West 10436 South (Building 9)
South Jordan, UT 84095



OFFICE | FOR LEASE

New construction commercial office space for lease.

PROPERTY INFORMATION

- > Approx. 1,488 - 5,888 SF Available
- > Lease rate: \$20.00 PSF, NNN
- > CAM: \$8.50 PSF
- > Large Windows with lots of natural light
- > Easy access to I-15 via 10600 South
- > Opportunity to lease the entire building

DEMOGRAPHICS

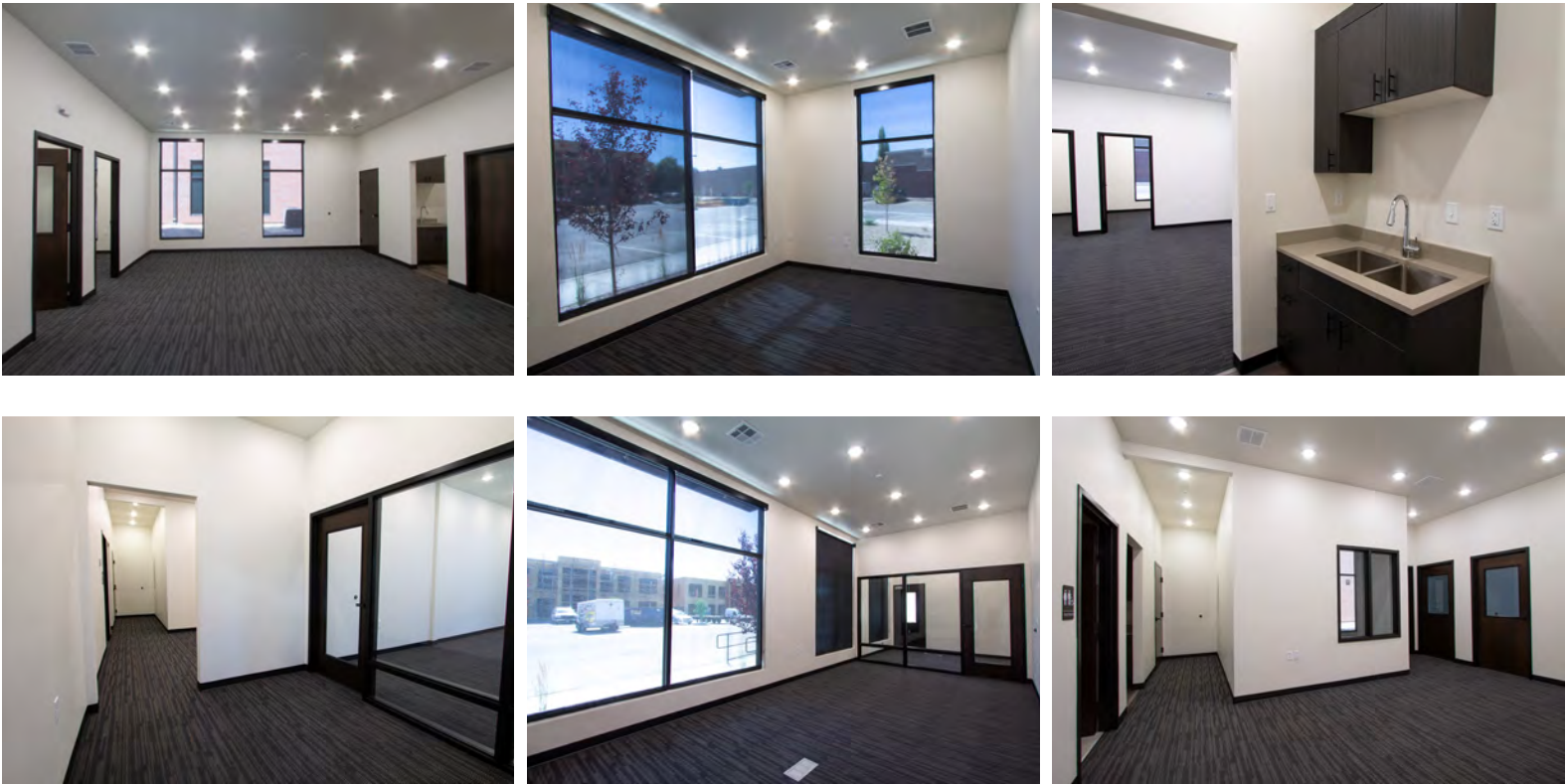
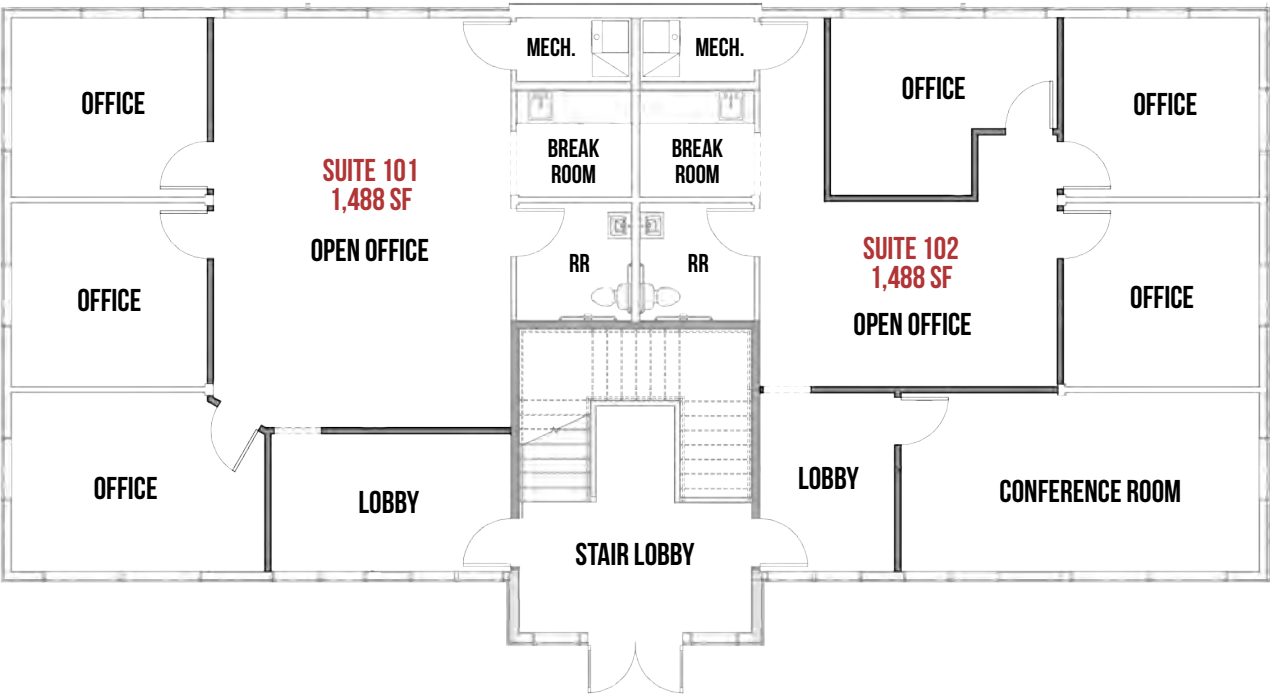
POPULATION	1 MILE	3 MILE	5 MILE
2022 EST	8,992	102,769	331,323
2027 PROJ	9,583	107,783	342,070

HOUSEHOLDS	1 MILE	3 MILE	5 MILE
2022 EST	3,516	34,784	108,217
2027 PROJ	3,766	36,735	112,551

INCOME	1 MILE	3 MILE	5 MILE
2022 AVG	\$150,612	\$140,616	\$142,063
2022 MED	\$121,107	\$109,107	\$110,584

Source: ESRI 2023

Floor Plan - First Floor



Floor Plan - Second Floor

