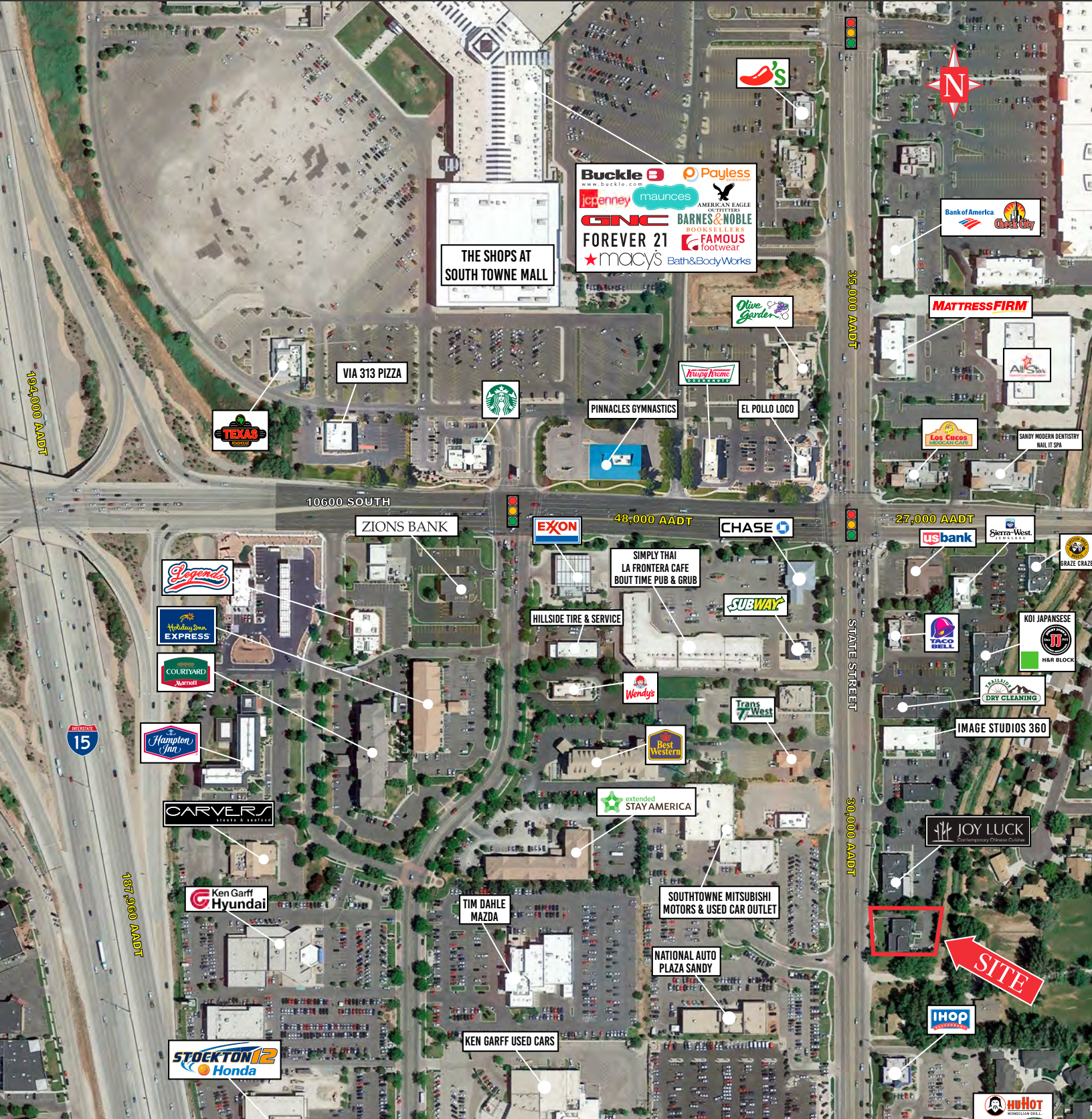


# Sandy Retail Showroom

10763 S. State Street  
Sandy, UT 84070



## RETAIL | FOR LEASE

### PROPERTY INFORMATION

- > \$26.00 PSF NNN
- > \$5.50 PSF CAM
- > 4,140 SF Available
- > Ground level door
- > Additional 460 SF mezzanine for storage
- > Excellent State Street location

### DEMOGRAPHICS

POPULATION	1 MILE	3 MILE	5 MILE
2023 EST	11,270	102,156	292,296
2028 PROJ	11,552	103,513	295,326
HOUSEHOLDS			
2023 EST	4,333	35,477	98,972
2028 PROJ	4,492	36,363	101,109
INCOME			
2023 AVG	\$112,429	\$123,918	\$129,348
2023 MED	\$88,734	\$96,326	\$95,891

Source: ESRI 2024



FLOOR PLAN

